



# Traffic Safety in Cambodia



**Ministry of Public Works and Transport**  
**General Department of Land Transport**  
**Land Transport Department**

# CONTENT

1- CAMBODIA SITUATION

2- LAND TRANSPORT MANAGEMENT

3- ROAD SAFETY AND VEHICLES INSPECTION

# 1.ABOUT CAMBODIA



Cambodia	
Area	181,035km <sup>2</sup>
Population	15,288,489 (2019 census)
Men	7,418,577
Women	7,869,912
<b>Capital City: Phnom Penh</b>	
Area	678.47km <sup>2</sup>
Population	2,129,371 people (2019)
Density	3,138 people/km <sup>2</sup>
<ul style="list-style-type: none"> <li><input type="checkbox"/> LOCATED IN THE SOUTHEAST ASIA</li> <li><input type="checkbox"/> ONE OF ASEAN</li> <li><input type="checkbox"/> BORDERED BY THAILAND TO THE NORTHWEST, LAOS TO THE NORTHEAST, VIETNAM TO THE EAST AND THE GULF OF THAILAND TO THE SOUTHWEST</li> </ul>	



# 2. LAND TRANSPORT MANAGEMENT

## STRUCTURE OF MINISTRY OF PUBLIC WORKS AND TRANSPORT

- CABINAT OF MINISTER
- GENERAL DEPARTMENT OF ADMINISTRATION AND FINANCE
- GENERAL DEPARTMENT OF PLANNING AND POLICY
- GENERAL DEPARTMENT OF TECHNIQUES
- GENERAL DEPARTMENT OF PUBLIC WORKS
- GENERAL DEPARTMENT OF LAND TRANSPORT**
- GENERAL DEPARTMENT OF WATERWAY-MARINE TRANSPORT AND PORT
- GENERAL DEPARTMENT OF LOGISTICS
- GENERAL DEPARTMENT OF SEWERAGE AND WATER TREATMENT
- GENERAL INSPECTORATE
- DEPARTMENT OF INTERNAL AUDIT
- RIAL DEPARTMENT
- DEPARTMENT OF TECHNOLOGY AND PUBLIC RELATIONS
- PROCUREMENT UNIT



### Department of Land Transport

- ✓ Prepare laws, regulations, policies for land traffic
- ✓ Control vehicles
- ✓ Issue driving license
- ✓ Manage cross-border transport
- ✓ Collect land transport data
- ✓ Direct, implement control and monitor the implementation of plans, policies, laws ...

### Department of Road Traffic Safety

- ✓ Manage road safety, operate road traffic – data collection of victims and crash
- ✓ Prepare policies and strategic plans for road safety management
- ✓ Educate, disseminate and provide training on road safety
- ✓ Prepare draft law and regulations
- ✓ Monitor and evaluate policies and action plans

### Department of Urban Transport

- ✓ Prepare plans, policies, laws and legal documents to control public transport
- ✓ Collect, compile, analyze, and manage transport data
- ✓ Manage public transport

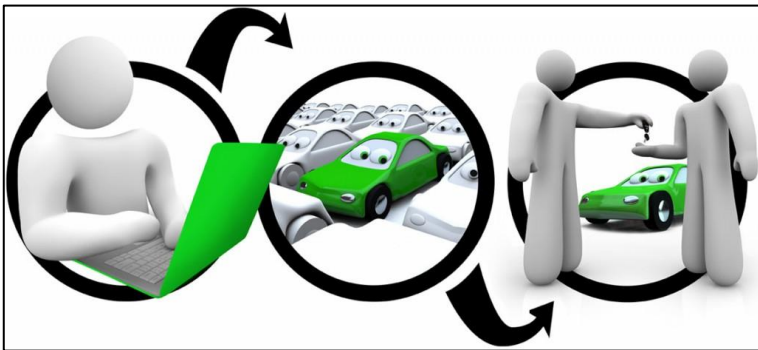
# 3.ROAD TRAFFIC SAFETY and VEHICLES INSPECTION



## VEHICLE REGISTRATION



## REGISTRATION DATA



VEHICLE REGISTRATION STATISTIC FROM 1990 TO 2020		
REGISTRATION	#	%
MOTORCYCLE	5,406,741	85.1%
LIGHT VEHICLE	676,097	10.6%
HEAVY VEHICLE	273,815	4.3%
TOTAL	6,356,653	



# VEHICLE INSPECTION (16 Vehicle Inspection Centers)

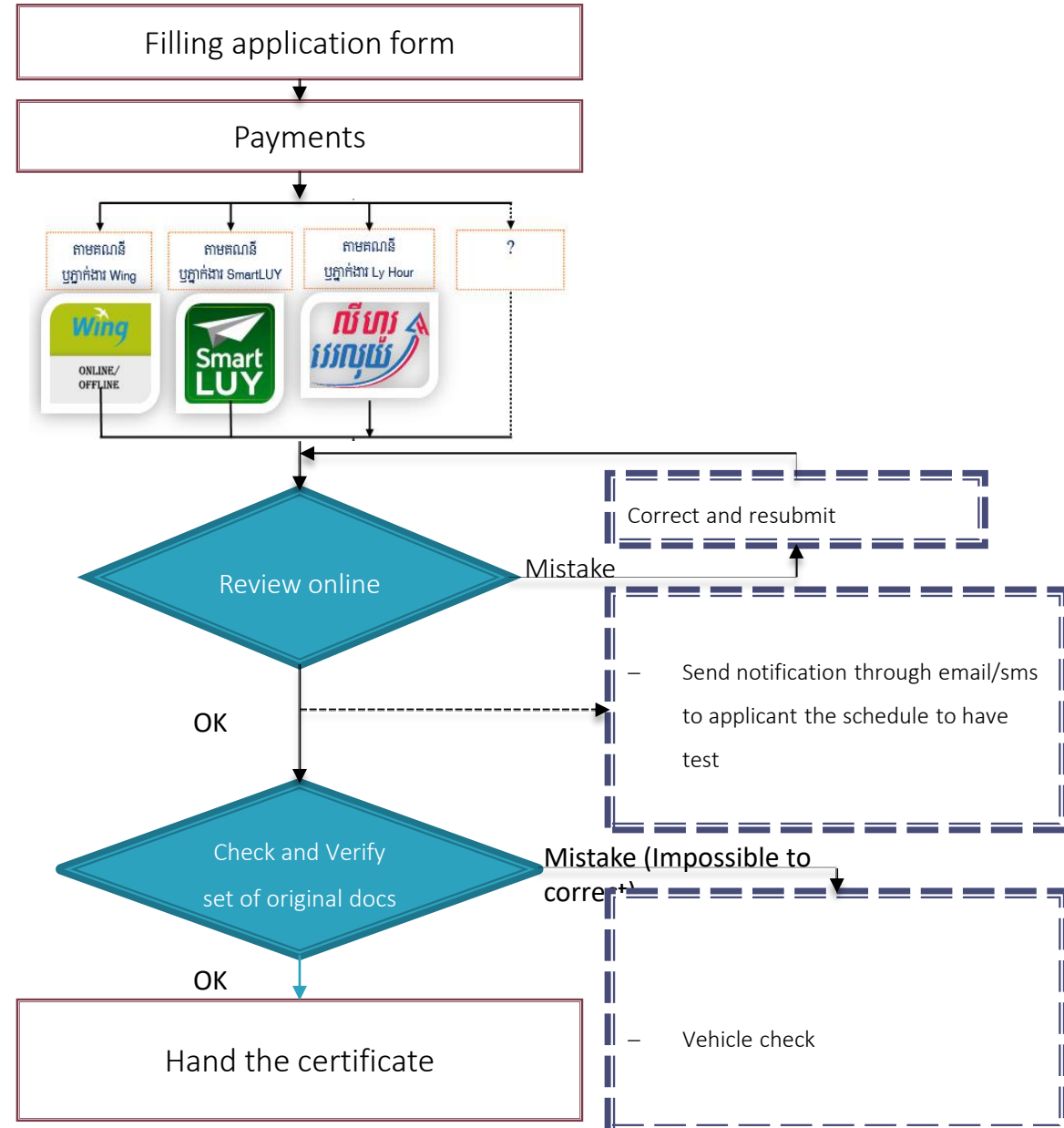


## OVERVIEW OF APPLY FOR VEHICLE INSPECTION

### Registration Requirements

- ID Card/Family Record
- Vehicle ID card
- Invoice
- Tax ( incase not yet have the number plat)

Apply for <http://vehicleinspection.mpwt.gov.kh>



# There are 20 vehicle inspection centers and 3 mobile inspection vehicles.



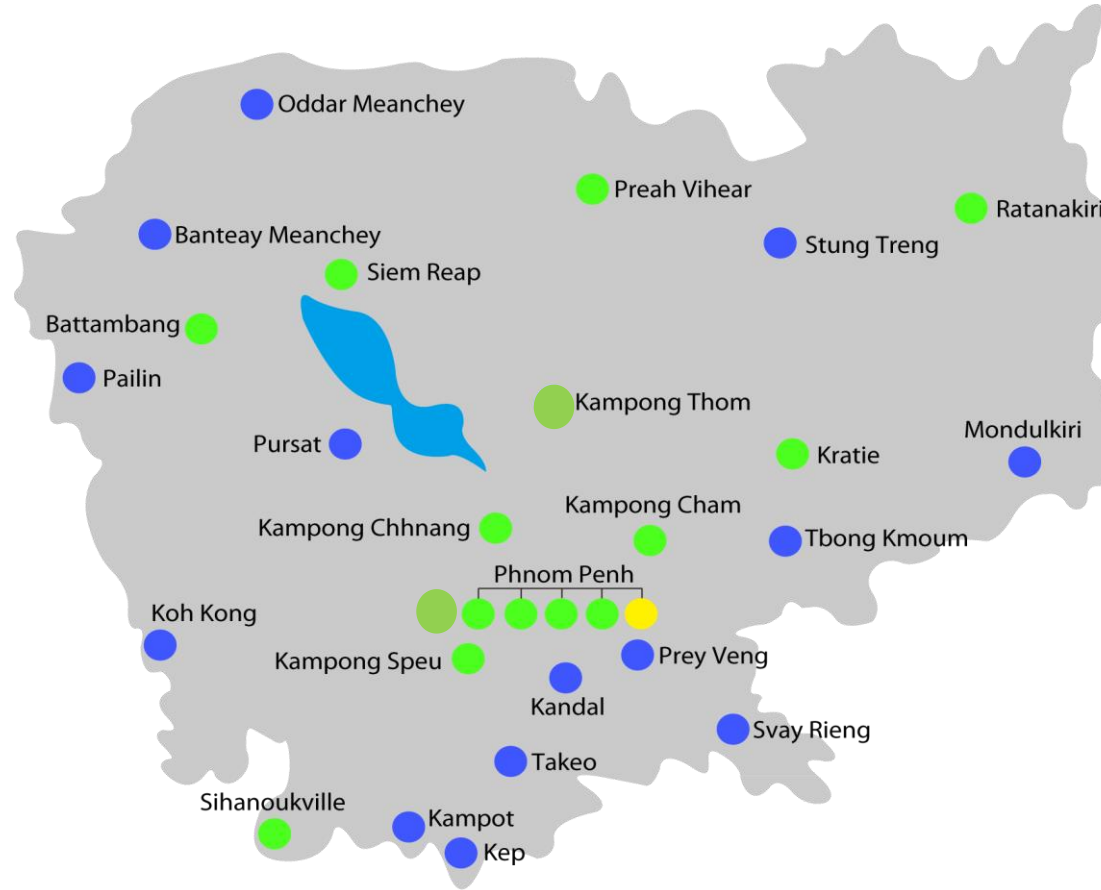
▲ ភ្នំពេញ មាត់ មណ្ឌល



▲ កំពង់ចាម



▲ ព្រះសីហនុ



- Department of Public Works and Transport
- Department of Public Works and Transport + Vehicle Inspection Center(CMVIC)
- Vehicle Inspection Center (HK)



▲ កំពង់ធំ



▲ ព្រះវិហារ



▲ សៀមរាប



▲ តេជះក្រី



▲ បាត់ដំបង



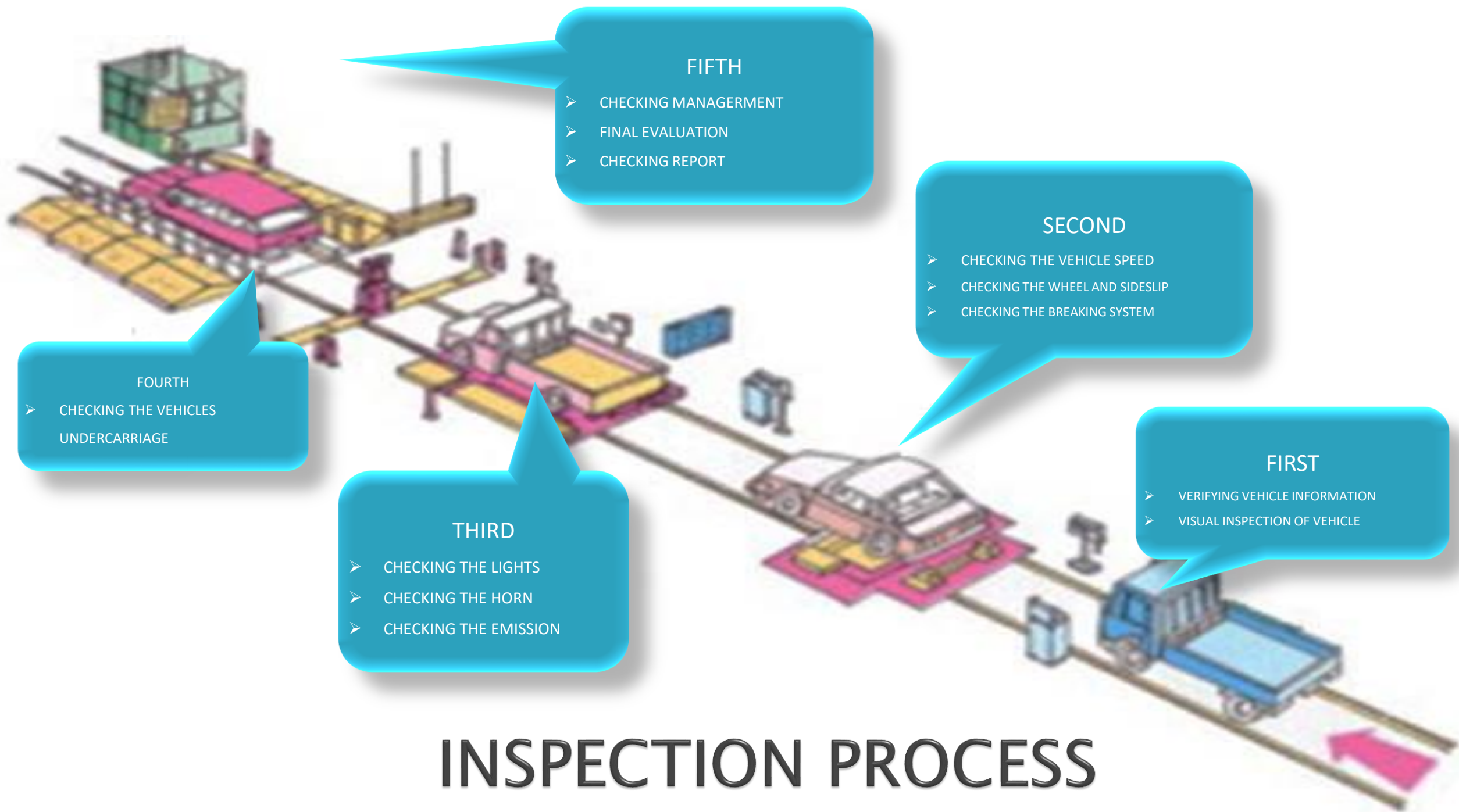
▲ កំពង់ស្ពឺ



▲ ក្រចេះ



▲ កំពង់ឆ្នាំង



### FIFTH

- CHECKING MANAGEMENT
- FINAL EVALUATION
- CHECKING REPORT

### SECOND

- CHECKING THE VEHICLE SPEED
- CHECKING THE WHEEL AND SIDESLIP
- CHECKING THE BREAKING SYSTEM

### FIRST

- VERIFYING VEHICLE INFORMATION
- VISUAL INSPECTION OF VEHICLE

### THIRD

- CHECKING THE LIGHTS
- CHECKING THE HORN
- CHECKING THE EMISSION

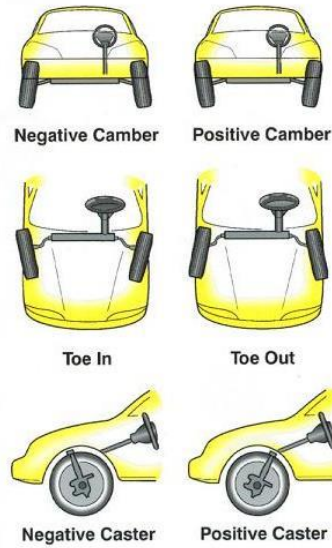
### FOURTH

- CHECKING THE VEHICLES UNDERCARRIAGE

# INSPECTION PROCESS



# INSPECTION PROCESS



# QR Code Checking



ព្រះរាជាណាចក្រកម្ពុជា  
KINGDOM OF CAMBODIA  
ជាតិ សាសនា ព្រះមហាក្សត្រ  
NATION RELIGION KING

ក្រសួងសាធារណការ និងដឹកជញ្ជូន  
MINISTRY OF PUBLIC WORKS AND TRANSPORT  
អគ្គនាយកដ្ឋានជំនាញដឹកជញ្ជូន  
GENERAL DEPARTMENT OF LAND TRANSPORT  
INR/No. 1765520072598

**វិញ្ញាបនបត្រត្រួតពិនិត្យលក្ខណៈបច្ចេកទេសយានយន្ត រ៉ឺម៉ក ស៊ីម៉ង់ត៍**  
CERTIFICATE OF VEHICLE TECHNICAL INSPECTION

ផ្ទាំងលេខ Number Plate	ថ្ងៃខែឆ្នាំត្រួតពិនិត្យ Inspection Date	ថ្ងៃខែឆ្នាំផុតកំណត់ Expiry Date
មិនមានផ្ទាំងលេខ	31-05-2017	31-05-2021
ម៉ាក Mark	ប្រភេទ Type	ពណ៌ Color
T VIOS	ត្រួសារ	N
ឆ្នាំផលិត Year Made	ចង្កូត Steering	ចំនួនស៊ីឡាំង/ទំហំស៊ីឡាំង/កម្លាំងសេះ No Cylinders/Piston Displacement/Engine Power
2017	ឆ្វេង(Left)	4 / 1329 (CC)/ 0 HP
ទម្ងន់យាន (គក) Vehicle Weight (Kg)	ទម្ងន់ផ្ទុកអតិបរមា(គក) Max.Load (Kg)	ទម្ងន់សរុប(គក) Gross Weight (Kg)
1300	50	1600
ចំនួនកៅអី Number of Seats	ប្រភេទប្រេង Type of Fuel	ទំហំកង់ Wheel Size
5	ស្លាំង	
បណ្តោយ(ម) Length(m)	ទទឹង(ម) Width(m)	កម្ពស់(ម) Height(m)
4.6	1.7	1.42
ចំនួនកៅ Number of Axes	លេខម៉ាស៊ីន Engine Number	លេខកាត់ស៊ី Body/Chassis Number
2	1NR-5068906	MR2B19F3X01017757

សំគាល់ (Note) : .....



វិញ្ញាបនបត្រនេះ មិនចាំបាច់មានចុះហត្ថលេខា  
The Signature is not required in this Certificate

## ស្តីពី របៀបផ្តល់ព័ត៌មានស្របត្រួត

### វិញ្ញាបនបត្រ និង លកាបត្រ ត្រួតពិនិត្យលក្ខណៈបច្ចេកទេសយានយន្តមាន QR CODE

ក្រសួងសាធារណការ និង ដឹកជញ្ជូន មានកិត្តិយស សូមជម្រាបជូនដល់សាធារណជនទាំងអស់ មេត្តាជ្រាបថា៖ ក្រសួងមានមោទនភាពខ្លាំងចំពោះការដាក់ប្រើប្រាស់ជាផ្លូវការដោយជោគជ័យនូវវិញ្ញាបនបត្រ និង លកាបត្រ ត្រួតពិនិត្យលក្ខណៈបច្ចេកទេសយានយន្តដែលមាន QR Code ជាមួយប្រព័ន្ធស្វ័យប្រវត្តិកម្មវិស័យដឹកជញ្ជូនផ្លូវគោក ព្រមទាំងបានការលើកសរសើរជាច្រើនពីសំណាក់សាធារណជននឹងបណ្តាញសារព័ត៌មាន។

ដើម្បីបង្កភាពងាយស្រួលក្នុងការពិនិត្យ និង បង្ការការកែប្រែបន្ត ក្រសួងសាធារណការ និង ដឹកជញ្ជូន សូមបង្ហាញជូនអំពីលក្ខណៈពិសេសនៃវិញ្ញាបនបត្រ និង លកាបត្រ ទម្រង់ថ្មីមាន QR Code ដូចខាងក្រោម៖





# ROAD TRAFFIC SAFETY



## CRASH DATA

### COMPARISON OF ROAD FATALITIES BETWEEN 2013-2017 AND 2018-2020

Number of casualties by years categories	2013-2017	2018-2020	GROWTH
	#		%
<b>Fatality</b>	<b>10235</b>	<b>5668</b>	<b>-45%</b>
<b>Serious Injury</b>	<b>26676</b>	<b>10990</b>	<b>-59%</b>
<b>Slight Injury</b>	<b>31283</b>	<b>14707</b>	<b>-53%</b>
<b>No Injury</b>	<b>342</b>	<b>134</b>	<b>-</b>
<b>Unknown</b>	<b>1853</b>	<b>158</b>	<b>-91%</b>



# ROAD TRAFFIC SAFETY



## CRASH DATA

COMPARISON OF ROAD FATALITIES BY ROAD USERS TYPE BETWEEN 2008-2012, 2013-2017 AND 2018-2019

Transportation categories	2008-2012	2013-2017	2018-2019
	#	#	
<b>Motorbikes</b>	<b>6136</b>	<b>7386</b>	<b>3012</b>
Pedestrian	1100	1045	381
Bicycle	336	256	77
Family car	585	600	117
Passenger vehicle	159	271	165
Good vehicle	409	328	163
Agricultural vehicle	211	233	43
Other	106	116	65



# 3.ROAD TRAFFIC SAFETY and VEHICLES INSPECTION



## CRASH DATA

### OVERVIEW OF ROAD FATALITIES (2013-2020)

Number of casuالتie by years	2013		2014		2015		2016		2017		2018		2019		2020 Police data only	
	#	%	#	%	#	%	#	%	#	%	#	%	#	%	#	%
Fatality	1950	12%	2226	14%	2231	16%	1852	16%	1976	15%	1871	16%	2152	16%	1645	26%
Serious Injury	5671	35%	6005	39%	5450	40%	4697	39%	4853	36%	3983	34%	4097	30%	2910	46%
Slight Injury	8109	50%	6425	42%	5746	42%	5009	42%	5994	45%	5658	48%	7271	53%	1778	28%
No Injury	166	1%	105	1%	71	1%	0	0%	0	0%	57	0%	77	1%	0	0%
Unknown	331	2%	554	4%	151	1%	341	3%	476	4%	101	1%	57	0%	0	0%
Total	16227	100%	15315	100%	13649	100%	11899	100%	13299	100%	11670	100%	13654	100%	6333	100%

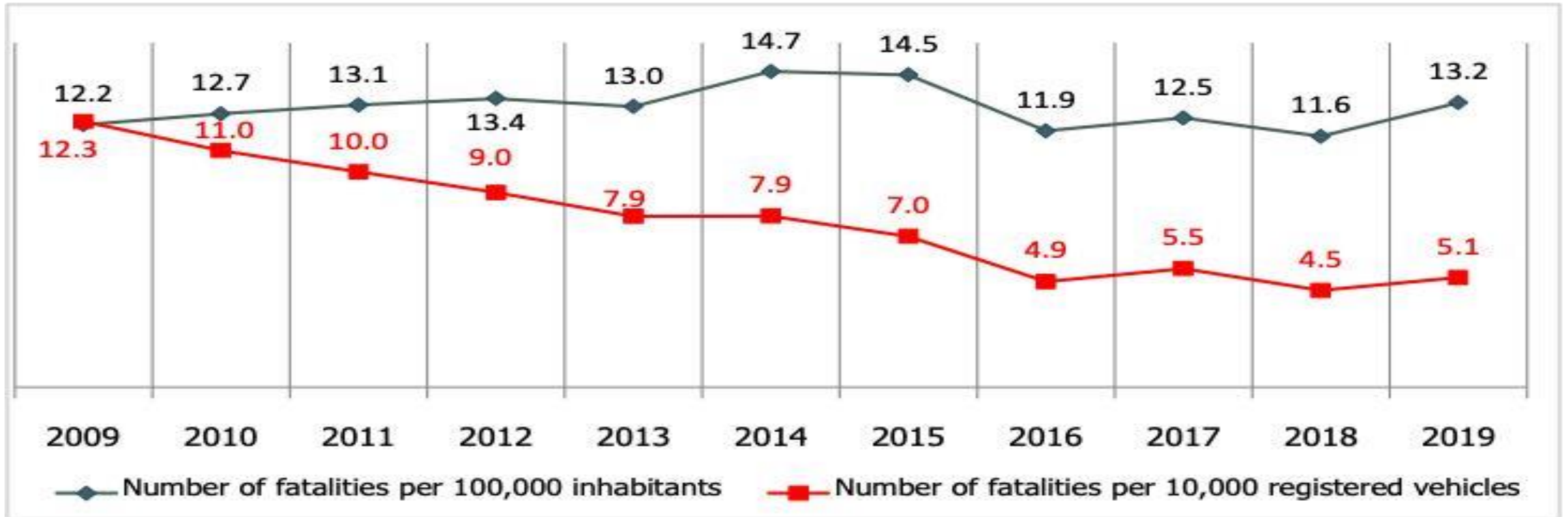


# ROAD TRAFFIC SAFETY



## CRASH DATA

PERCENTAGE OF ROAD FATALITIES WITH POPULATION AND VEHICLES IN CAMBODIA, 2006-2019





# ROAD TRAFFIC SAFETY



## CRASH DATA

### THE NUMBER OF FATALITIES BY TRANSPORT MODE (2013-2019)

Transportation categories by years	2015		2016		2017		2018		2019	
	#	%	#	%	#	%	#	%	#	%
<b>Motorbikes</b>	<b>1586</b>	<b>71%</b>	<b>1361</b>	<b>73%</b>	<b>1474</b>	<b>75%</b>	<b>1392</b>	<b>74%</b>	<b>1620</b>	<b>75%</b>
Pedestrian	221	10%	178	10%	177	9%	177	9%	204	9%
Bicycle	55	2%	42	2%	48	2%	42	2%	35	2%
Family car	131	6%	115	6%	88	4%	64	3%	53	2%
Passenger vehicle	62	3%	60	3%	78	4%	74	4%	91	4%
Good vehicle	60	3%	65	4%	52	3%	73	4%	90	4%
Agricultural vehicle	79	4%	20	1%	36	2%	22	1%	21	1%
Other	37	2%	11	1%	23	1%	27	1%	38	2%
Total	2231	100%	1852	100%	1976	100%	1871	100%	2152	100%



# NATIONAL MECHANISM

## NATIONAL ROAD SAFETY COMMITTEE

The purpose of creation:

- ❑ Mobilize to increase cooperation, coordination, facilitation between ministries and relevant institutions to encourage the implementation of the National Road Safety Policy and Law on Road Traffic
- ❑ Protect the life of the people and prevent damage and loss of property and environment caused by traffic accident and traffic violations
- ❑ Ensure firm road safety and traffic order





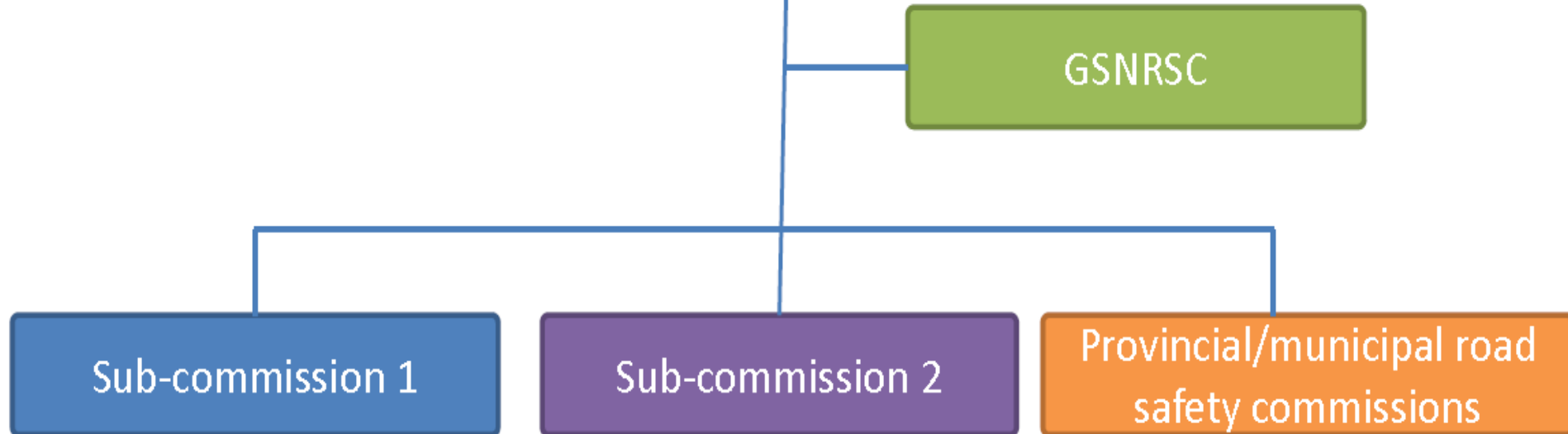
# NATIONAL MECHANISM

## STRUCTURE OF NRSC

06 June 2005



08 July 2015





# NATIONAL MECHANISM



## RULES & REGULATIONS



### LAW ON ROAD TRAFFIC

Chapter 7: Vehicle and  
Transportation management

- ✓ To raise awareness of road traffic safety
- ✓ To govern road traffic safety
- ✓ To maintain road traffic order
- ✓ To prevent road traffic offense/violations



### SUB-DECREE ON PROVISIONAL PENALTIES ON ROAD TRAFFIC LAW VIOLATIONS

- ✓ To raise awareness of road traffic law
- ✓ To increase the effectiveness of road traffic law enforcement to improve road traffic order and safety
- ✓ To determine road traffic violations and fines



### NATIONAL ROAD SAFETY POLICY (2011-2020)

- ✓ 8 pillars (road safety management, infrastructure, safe vehicles, road user behavior, post crash care, law enforcement, driving licenses, management & evaluation on transport service)



# LAW ENFORCEMENT

- ✓ Helmet wearing
- ✓ Driving over speed limit
- ✓ Overloading
- ✓ Drink-driving
- ✓ Driving license & registration card
- ✓ None respect to technical specification
- ✓ None respect STOP sign
- ✓ None respect of give way
- ✓ Driving in opposite direction





# AWARENESS

- ❑ Mobile app – CAMBODIA DRIVING RULES
- ❑ Road safety awareness campaigns
- ❑ Reflective sticker campaigns
- ❑ TV/radio spots
- ❑ Radio talk shows
- ❑ Road talk shows
- ❑ Journalist RS Training
- ❑ National & International events (ROAD SAFETY WEEK, WORLD REMEMBRANCE DAY)
- ❑ Road traffic law awareness campaigns
- ❑ Role of excellence (PRIMINISTER OF CAMBODIA – wearing helmet)





# CHALLENGES & IMPROVEMENT

- Studies on motorbike fatalities and
- Technical support to implement road safety action plans
- Capacity building on road safety research field
- Studies on how to create motorcycles strategy
- A strict policy on motorbike registration
- Monitoring and evaluation system

# WAY FORWARD ON VEHICLE EMISSION STANDARD

- Government circular no.01 on the measure to prevent and reduce air pollution (January 2<sup>nd</sup> 2020)

Standard	Type of fuel	Permissible pollutants	Date of implementation
Euro 4	Gasoline	CO ≤1.0g/km HC ≤0.1g/km NOx ≤0.08g/km	From 01 January 2022
Euro 4	Diesel	CO ≤0.5g/km HC+NOx ≤0.3g/km NOx ≤0.25g/km PM ≤ 0.025g/km	From 01 January 2022
Euro 5	Gasoline	CO ≤1.0g/km HC ≤0.1g/km NOx ≤0.06g/km PM ≤ 0.005g/km	From 01 January 2027
Euro 5	Diesel	CO ≤0.5g/km HC+NOx ≤0.23g/km NOx ≤0.18g/km PM ≤ 0.005g/km	From 01 January 2027

**ឧបសម្ព័ន្ធទី២នៃសវនាមរណ៍ ០១ ខែ ០១ ឆ្នាំ ២០២០**  
**ស្តីពីការបញ្ជាក់ស្តង់ដារបំពុលខ្យល់ពីរថយន្ត**

ប្រភេទស្តង់ដារ	ប្រភេទឥន្ធនៈ	កម្រិតសារធាតុបំពុលខ្យល់អនុញ្ញាតឱ្យបញ្ចេញពីថយន្ត	កាលបរិច្ឆេទអនុវត្ត
ប្រភេទ៤ (EURO IV)	សាំង	- CO ≤ ១,០ក្រាមក្នុង១គីឡូម៉ែត្រ (≤ 1.0 g/km) - HC ≤ ០,១ក្រាមក្នុង១គីឡូម៉ែត្រ (≤ 0.1 g/km) - NOx ≤ ០,០៨ក្រាមក្នុង១គីឡូម៉ែត្រ (≤ 0.08 g/km)	ចាប់ពីថ្ងៃទី១ ខែមករា ឆ្នាំ២០២២
	ម៉ាស៊ូត	- CO ≤ ០,៥ក្រាមក្នុង១គីឡូម៉ែត្រ (≤ 0.5 g/km) - HC + NOx ≤ ០,៣ក្រាមក្នុង១គីឡូម៉ែត្រ (≤ 0.3 g/km) - NOx ≤ ០,២៥ក្រាមក្នុង១គីឡូម៉ែត្រ (≤ 0.25 g/km) - PM ≤ ០,០២៥ក្រាមក្នុង១គីឡូម៉ែត្រ (≤ 0.025 g/km)	
ប្រភេទ៥ (EURO V)	សាំង	- CO ≤ ១,០ក្រាមក្នុង១គីឡូម៉ែត្រ (≤ 1.0 g/km) - HC ≤ ០,១ក្រាមក្នុង១គីឡូម៉ែត្រ (≤ 0.1 g/km) - NOx ≤ ០,០៦ក្រាមក្នុង១គីឡូម៉ែត្រ (≤ 0.06 g/km) - PM ≤ ០,០០៥ក្រាមក្នុង១គីឡូម៉ែត្រ (≤ 0.005 g/km)	ចាប់ពីថ្ងៃទី១ ខែមករា ឆ្នាំ២០២៧
	ម៉ាស៊ូត	- CO ≤ ០,៥ក្រាមក្នុង១គីឡូម៉ែត្រ (≤ 0.5 g/km) - HC + NOx ≤ ០,២៣ក្រាមក្នុង១គីឡូម៉ែត្រ (≤ 0.23 g/km) - NOx ≤ ០,១៨ក្រាមក្នុង១គីឡូម៉ែត្រ (≤ 0.18 g/km) - PM ≤ ០,០០៥ក្រាមក្នុង១គីឡូម៉ែត្រ (≤ 0.005 g/km)	

៦ / ៧



## CONCLUSION

- Public transport promotes safety for motorcycles and reduces the number of vehicle registration
- Law enforcement and awareness are accompanying together
- Motorcycle safety strategy can reduce the number of motorcycle fatalities

អរគុណច្រើន!

THANK YOU SO MUCH!